

# KENNEDY VALVE



## UL/FM CHECK VALVES

Fig. 1126 / 1126A Iron Swing Check

Fig. 726 Grooved Check

Fig. 806 Wafer Check

Underwriters'/Factory Mutual

Underwriters' Canada

Kennedy Swing Check Valves are for use where backflow is to be prevented. The disc is designed with ample tolerances to compensate for seat ring wear. The spinning action of the disc creates a regrinding effect that cleans the seat ring of foreign particles. The disc is also self-adjusting. All moving parts of these valves are bronze to bronze, minimizing wear and corrosion problems.

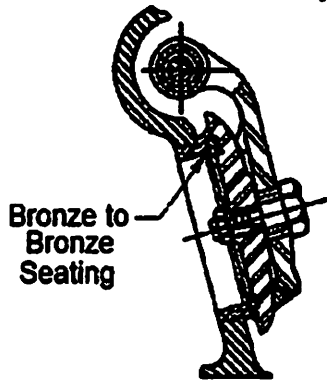
These valves are listed by Underwriters' Laboratories and approved by Factory Mutual Fire Research Corp. and have body markings "UL" and "FM" signifying the listing and approval.

# Kennedy Iron Swing Check Valves UL/FM

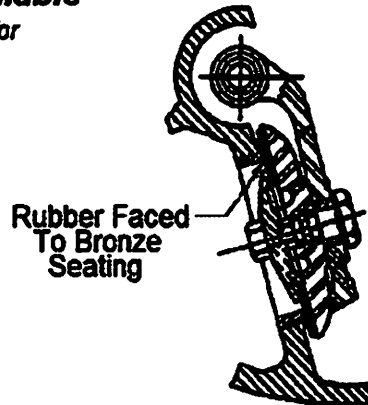
**Working Pressure:** Cold Water, Non-Shock, 175 Lbs. (2½"-12") **Hydrostatic Test Pressure:** Seat and shell, 350 PSI. (2½"-12") **Construction:** Bronze Mounted with Bronze Disc or Resilient Disc

## Two Styles Available

See Next Page for Further Detail



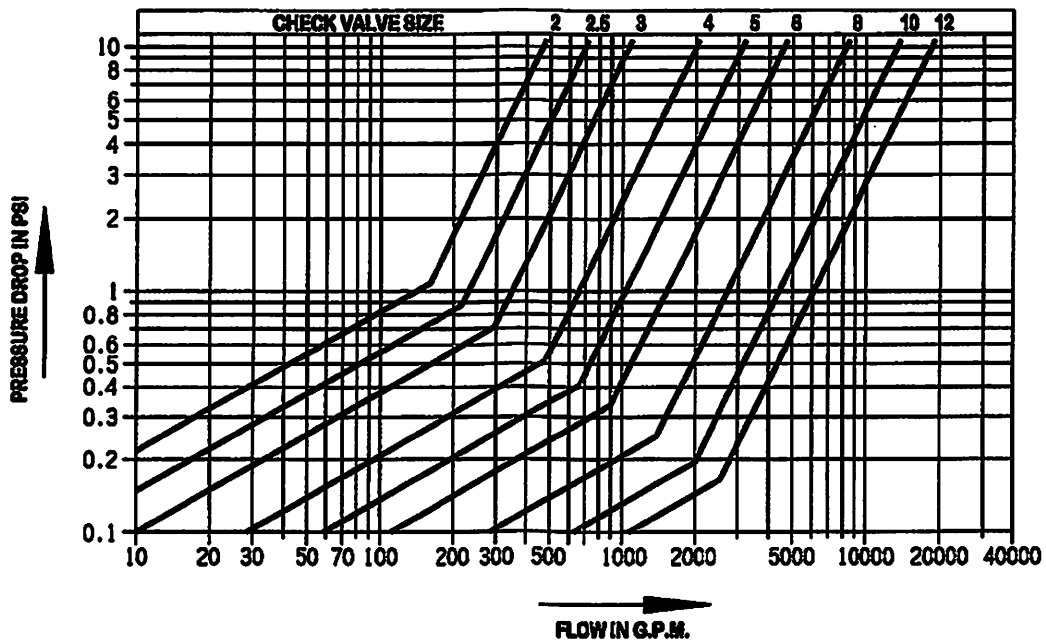
**FIG. 1126  
BRONZE DISC  
FLANGED ENDS  
SIZE: 2½" THRU 12"**



**FIG. 1126A  
RESILIENT DISC  
FLANGED ENDS  
SIZE: 2½" THRU 12"**

## FLOW VERSUS PRESSURE DROP

Data Representative of Kennedy Figure 1126 and 1126A Swing Check Valves



# Iron Swing Check Valves

Underwriters' / Factory Mutual / ULC  
 APPROVED BY N.Y.C. BOARD OF STDS.

- Bronze Mounted with:  
 • Rubber Faced Disc  
 -or-  
 • Bronze Faced Disc

Working Pressures: 2 1/2"-12" Cold Water, Non-Shock, 175 II

Approvals: UL/FM/ULC - 2 1/2"-12" Fig. 1126 and 1126A

Factory Test Pressure: Seat and Shell 350 PSI

End Flange Drilling: 125 LB American Standard

Work with Page 15-9

Common Parts: Use with all Figures

Part No.	Description	Material	A.S.T.M. Spec.
1	Cap Bolt	Stainless Steel 18-8	F893C
2	Cap	Cast Iron	A-126 Class B
3	O' Ring	Buna 'N'	-
5	Body	Cast Iron	A-126 Class B
6	Hinge Pin	Stainless Steel	A-276 (304)
7	Hinge Bushings	Sm. Bronze	+ 4" Thru 12"
12	Seat Ring	Bronze	B-62
13	Disc Plug	Small Socket 3/4" Pipe Plug	A-126 Class B
26	Side Plug with O-Ring 26A	Bronze Rod	B-16
26A	O-Ring for Side Plug 26	Buna 'N'	-

\*Cannot be ordered separately, only with hinge.  
 †9/16 Allen Wrench Req'd for Removal/Installation

Fig. 1126 Bronze Disc Assembly Sizes 2 1/2" and 3"

8	Hinge	Mang. Bronze	B554 Alloy C864
10	Disc Nut	Bronze Rod	B-16
11	Disc	Bronze	B-62

Fig. 1126 Bronze Faced Disc Assembly Sizes 4" through 14"

14	O' Rings	Buna 'N'	-
15	Disc Bolt	Bronze Rod	B-16
17	Hinge	Malleable Iron	A-47
18	Disc	Malleable Iron	A-47
19	Disc Ring	Bronze	B-62

\*Cannot be ordered separately.

Fig. 1126A Rubber Faced Disc Sizes 2 1/2" and 3"

20	Disc Holder	Bronze	B-62
21	Disc	4.6 EPDM	Rubber
30	Disc Plate	Bronze Rod	B-16
24	Disc Nut (2 Req'd)	Bronze Rod	B-16
27	Disc Bolt Bushing	Sm. Bronze	-

\*Cannot be ordered separately.

Fig. 1126A Rubber Faced Disc Sizes 4" through 12"

20	Disc Holder	Malleable Iron	A-47
21	Disc	6-12 Nitrile (Buna N) Rubber	-
22	Disc Plate	Bronze	B-62
23	Disc Bolt	Bronze Rod	B-16
24	Disc Nut (1 Req'd)	Bronze Rod	B-16
26	O' Rings	Buna 'N'	-
27	Disc Bolt Bushing	Sm. Bronze	-

\*Cannot be ordered separately, only with hinge.

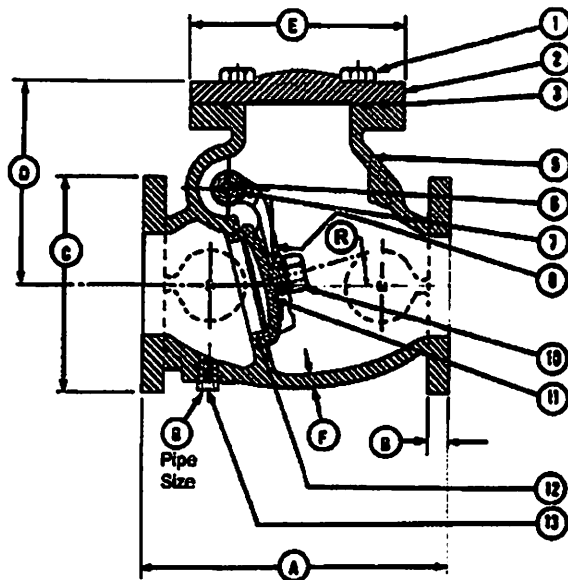
## Common Reference Dimensions

SIZE	A	B	C	D	E	F	G	R
2 1/2"	10	7 1/2	7	6 1/2	7	1 1/2	1/2	10.0
3"	10 1/2	7 1/2	7 1/2	6 1/2	7 1/2	1 1/2	1/2	8.0
4"	13	9 1/2	9	8 1/2	9	1 1/2	1/2	8.0
6"	18	11	11	10 1/2	11	1 1/2	1/2	12.0
8"	19	11 1/2	11 1/2	11 1/2	12 1/2	1 1/2	1/2	15.0
10"	22	14 1/2	14	13 1/2	15 1/2	1 1/2	1/2	15.0
12"	26	17 1/2	16	15 1/2	18	1 1/2	1/2	15.0

## WEIGHT - POUNDS

SIZE	2 1/2"	3"	4"	6"	8"	10"	12"
FIG. 1126	82	62	114	145	195	319	680
FIG. 1126A	65	62	117	145	196	322	685

FIG. 1126 - FIG. 1126A  
 Flanged Ends



Common Parts, Dimensions, and Fig. 1126 2.5" & 3" Internal Components

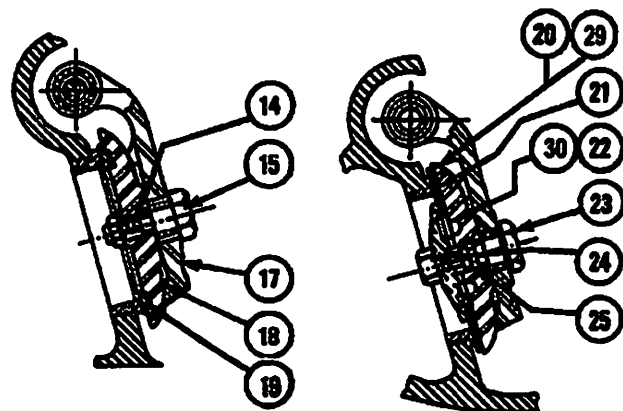


FIG. 1126  
 Internal Components  
 Bronze Faced Disc  
 4" through 12"

FIG. 1126A  
 Internal Components  
 Rubber Faced Disc

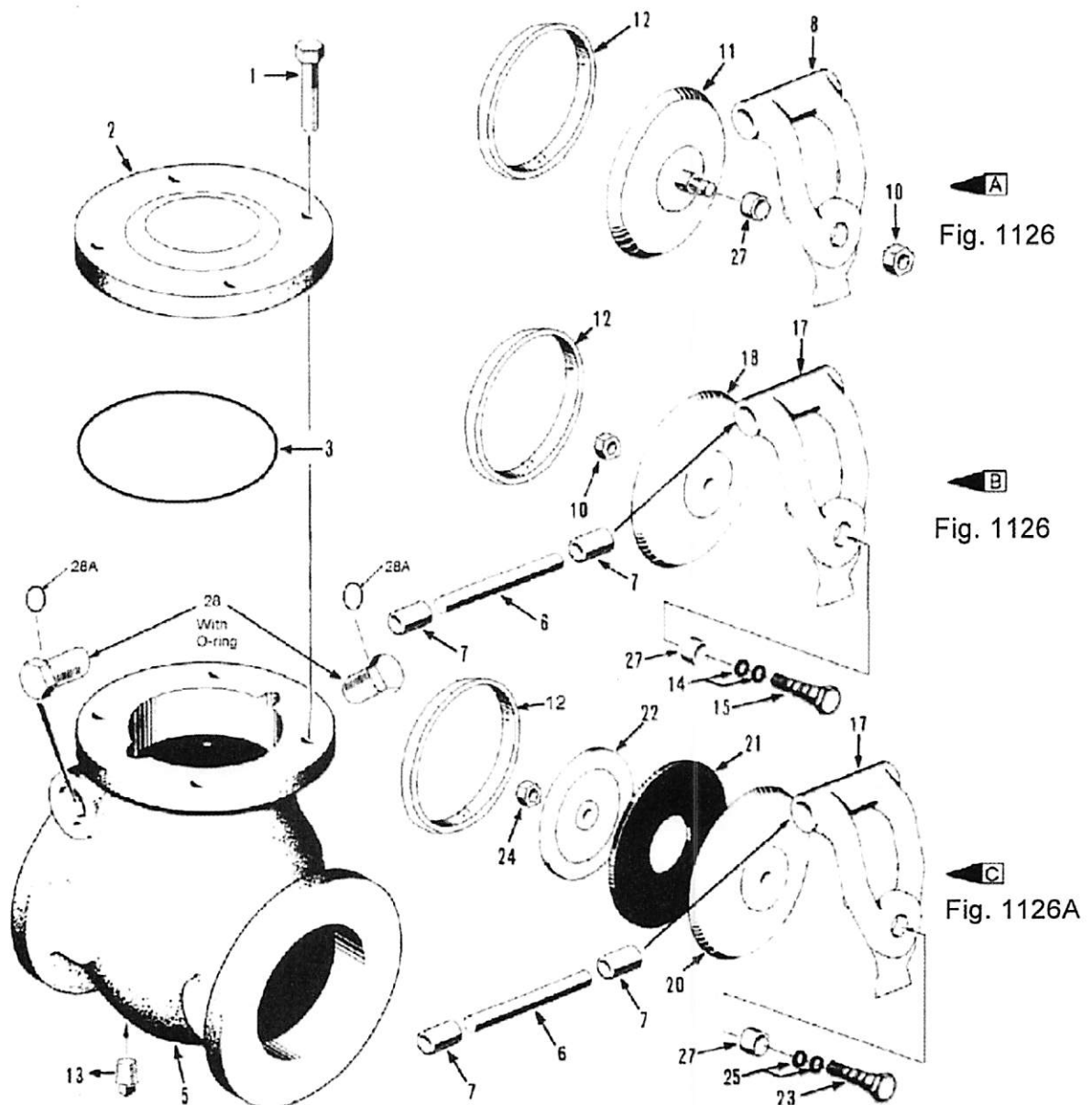
# Iron Swing Check Valves

*Underwriters' / Factory Mutual  
Underwriters' Canada*

- Bronze Mounted with  
Rubber Faced Disc or Bronze Faced Disc

## Exploded View

- A** FIG. 1126 Bronze Disc Assembly, Size 2 1/2" and 3" Center
  - B** FIG. 1126 Bronze Faced Disc Assembly, Size 4" thru 12"
  - C** FIG. 1126A Rubber Disc Assembly, Size 4" thru 12" Bottom
  - FIG. 1126A Rubber Disc Assembly, Size 2 1/2" and 3" - Not Shown
- See Page 15-8 for Detail. Also see Page 15-8 for Number Identification

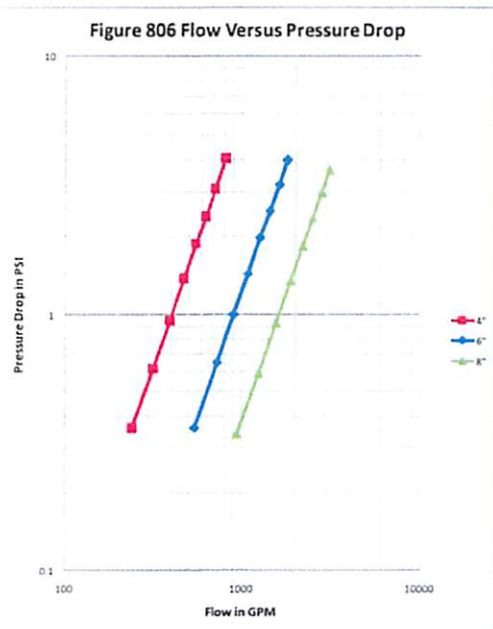
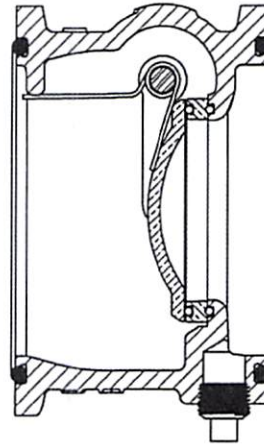
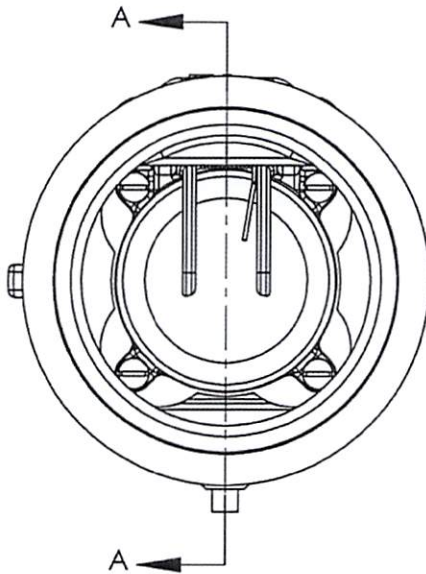
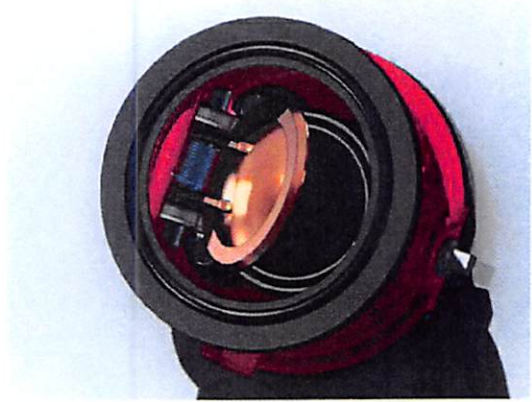


# KENNEDY VALVE FIGURE 806 WAFER CHECK VALVES

UL/ULC Listed and FM Approved

300 psi rated working pressure, non-shock  
Hydrostatically tested at the factory to  
600 psi, seat and shell

- Sizes 4, 6, and 8 inch
- Ductile Iron Body
- Aluminum Bronze Clapper and Seat Ring
- Resilient Seating
- "O" Ring End Seals
- Stainless Steel Spring and Clapper Pin
- All Components Lead Free
- Fusion Bonded Epoxy Coated Interior and Exterior



Compact, for installation between standard ASME B16.1 class 125 or class 150 flanges.

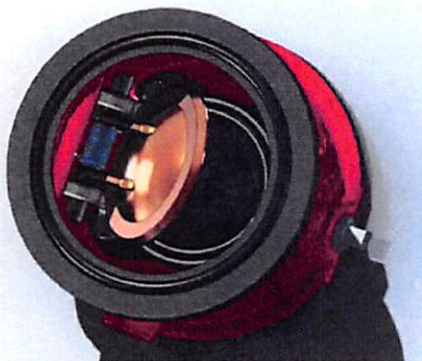
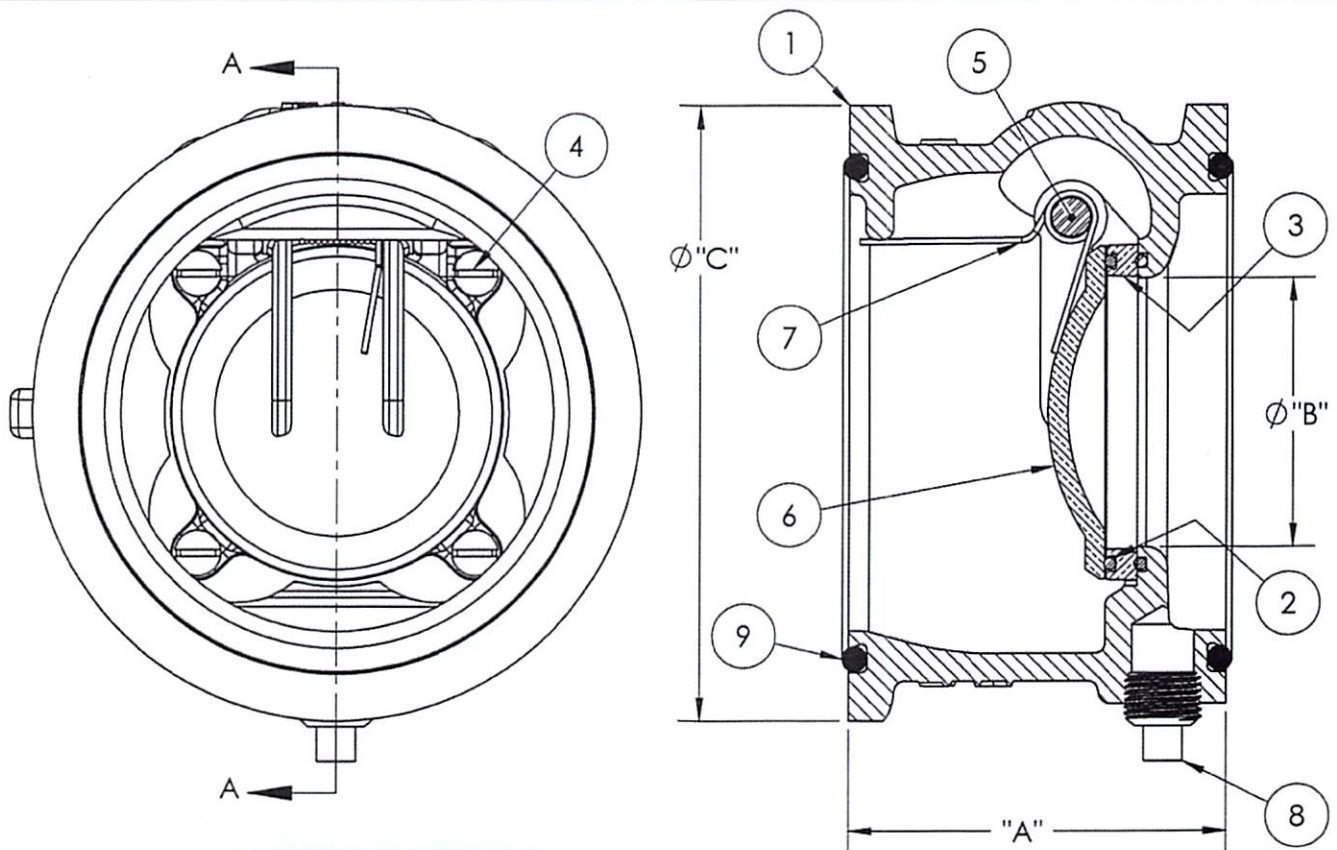
Mounting between class 250/300 flanges requires use of spacers.

Kennedy WAFER CHECK VALVES have spring loaded aluminum bronze clappers, resilient seating, and utilize "O" rings rather than gaskets for end seals.

Flow Verses Pressure Drop Data from  
Utah Water Research Laboratory  
Report No. 2040 and 2073

# Wafer Check Valves Technical/Dimensional Data

ITEM NO.	DESCRIPTION	MATERIAL	QTY.
1	Body	Ductile Iron, ASTM A536 grade 70-50-5	1
2	Oring	Buna-N	2
3	Seat Ring	Aluminum Bronze, ASTM B806 C95400/C95500	1
4	Screw	18-8 Stainless Steel	4 (8" SIZE HAS 6)
5	Pin	18-8 Stainless Steel	1
6	Clapper	Aluminum Bronze, ASTM B806 C95400/C95500	1
7	Spring	302 Stainless Steel	1
8	1/2" NPT Pipe Plug	Steel	1 (4" SIZE ONLY)
9	Oring	Buna-N	2

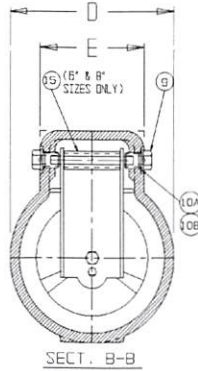


SIZE	"A"	"B"	"C"	WT lbs
4"	4.25	3.00	6.88	12
6"	4.25	4.50	8.75	18
8"	4.25	6.00	11.00	26

# KENNEDY VALVE FIGURE 726 GROOVED CHECK VALVES

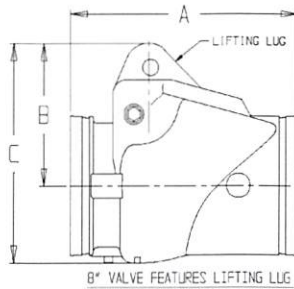
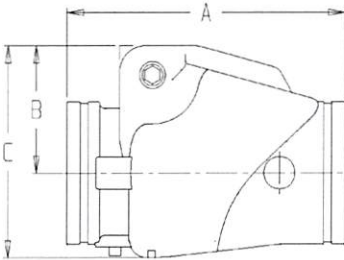
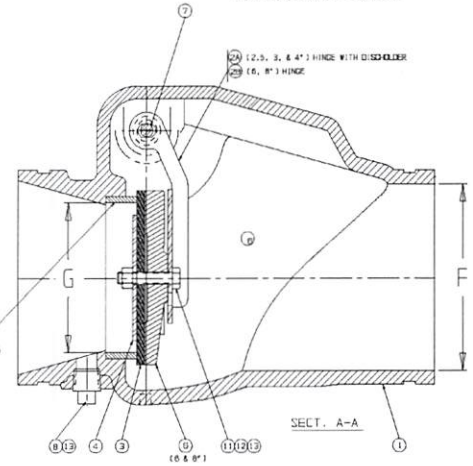
Kennedy Valve Figure 726 is a ULFM-approved Grooved End Check Valve. It is a light-weight unit that is intended to be easily installed with approved IPS grooved couplings. They may be installed either with the flow in a vertical position (flow up) or horizontally. Upon request valves can have a 1/2" NPT connection on the inlet side for installation of a 1/2" ball drip.

SIZE	A	B	C	D	E	F	G
2.5	8.63	3.1	5.6	4.8	4.0	2.5	2.0
3	9.13	3.4	6.0	5.3	4.0	3.0	2.4
4	10.00	3.8	6.8	6.0	4.0	4.0	3.0
6	13.28	6.0	10.0	7.9	5.0	6.0	4.6
8	14.50	8.8	13.6	9.6	5.0	8.0	6.2



MARK.	QTY.	PART NAME	MATERIAL	REMARKS
1	1	VALVE BODY	DUCTILE IRON	
2A	1	HINGE WITH DISC HOLDER (INTEGRAL)	STAINLESS STEEL (SS304)	SIZE 2.5-4"
2B		HINGE	STAINLESS STEEL (SS304)	SIZE 6 & 8"
3	1	RESILIENT DISC	EPDM (2.5-6"), Buna N (8")	
4	1	DISC PLATE	STAINLESS STEEL (SS304)	
5	1	SEAT RING	BRASS - TIN COATED	
6	1	DISC HOLDER	DUCTILE IRON	SIZE 8 & 8"
7	1	HINGE PIN	STAINLESS STEEL (SS304, 18-8)	
8	1	1/2" PIPE PLUG	STEEL	
9	2	SIDE PLUG	STAINLESS STEEL (SS304, 303)	
10A	2	O-RING - DASH 110	UL NITRILE	SIZE 2.5-4"
10B	2	O-RING - DASH 113	UL NITRILE	SIZE 8 & 8"
11	1	NUT	STAINLESS STEEL (18-8)	
12	1	BOLT	STAINLESS STEEL (18-8)	
13	1	SEALANT		
14	1	SEALANT		
15	1	SPACER	BRASS 1/2" PIPE	SIZE 8 & 8"

NOTE: REFER TO BILL OF MATERIAL FOR DRAWINGS AND SPECIFIC SIZES OF HARDWARE.



BODY MARKING		MATERIAL		KENNEDY VALVE	
OTHER SIDE	THIS SIDE	PART.	WEIGHT	ELMIRA, NY	14901
300V	726	GROOVED END, ENCLOSED CHECK VALVE ASSEMBLY - FIG 726			
Size UL	FM	RATED 300PSI			
YEAR	KENNEDY	DRAWN BY: JWB/SJC			
		CNC NO: 81729			
		DATE: 1-23-18			

