



KENNEDY VALVE

# 2945W WALL POST

## CERTIFICATIONS

ISO 9001

ISO 14001

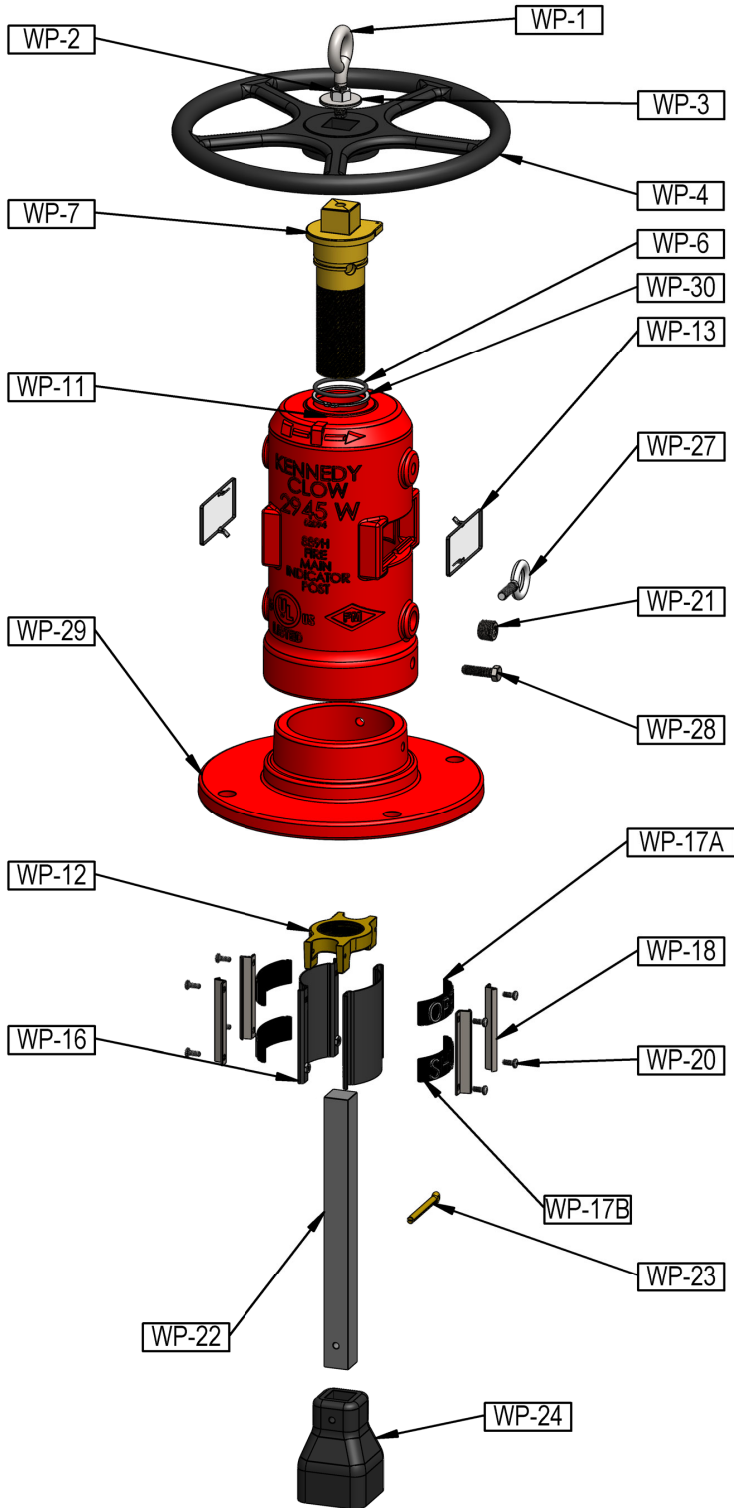
BS OHSAS 18001



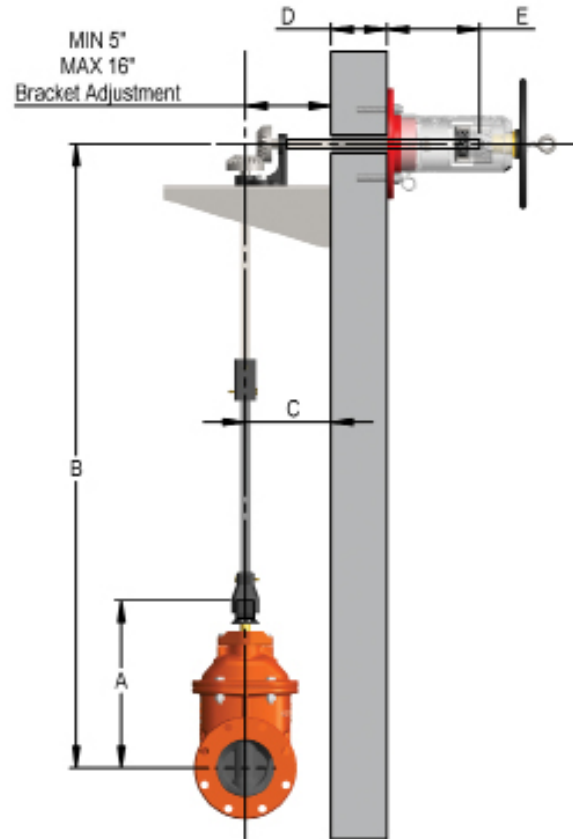
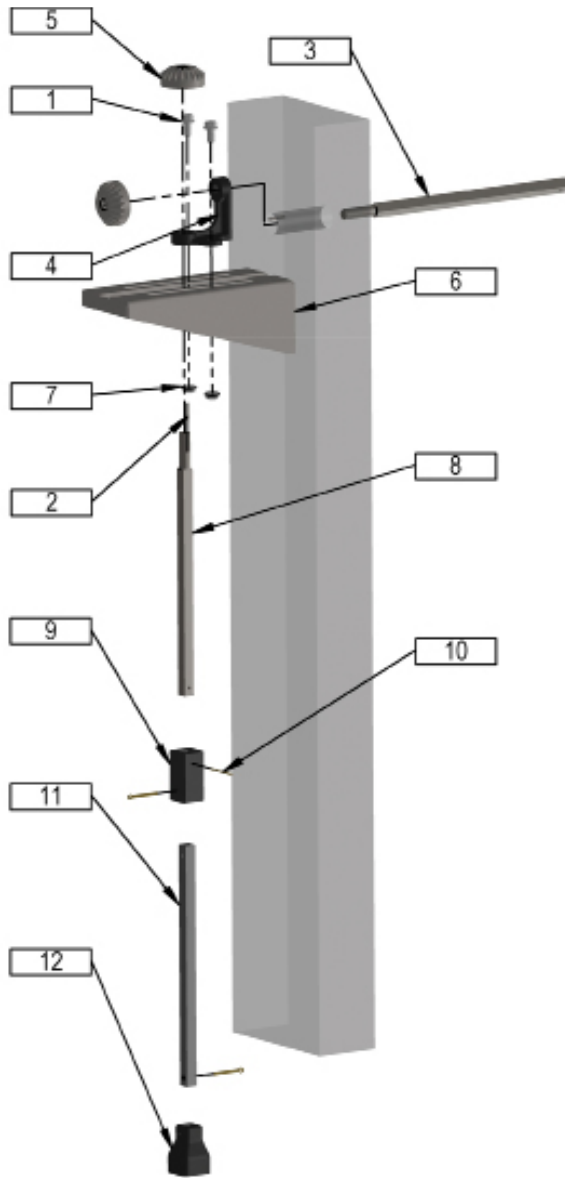
\* Listings specific  
to product



WWW.KENNEDYVALVE.COM



NO.	ITEM	QTY	MATERIALS
WP-1	1/2" Eye Bolt	1	Steel
WP-2	1/2" Hex Nut	1	Steel
WP-3	5/8" OD Washer	1	Steel
WP-4	Handwheel - 14" Diameter	1	Cast Iron
WP-6	Retainer O-Ring #226	1	Buna
WP-7	Operating Stem Nut	1	Bronze ASTM B584 Alloy 864
WP-11	Top Section	1	Cast Iron ASTM A126 Class B
WP-12	Target Carrier Nut	1	Bronze ASTM B584 Alloy 864
WP-13	Window Glass	1	Lexan-UV Stabilized
WP-16	Target Carrier Plate	2	1/16" Sheet Metal
WP-17A	Open Target Plate	2	Cast Aluminum
WP-17B	Shut Target Plate	2	Cast Aluminum
WP-18	Clamp Target Retainer	4	16. GA 302 SS
WP-20	#10-24 x 1/2" Pan Head Screw	8	Zinc Plated
WP-21	1/2" NPT Pipe Plug	1	Mall. Iron
WP-22	Stem 1" Sq. (Order by Length)	1	AISI M1020 HRS
WP-23	Cotter Pin	1	Brass
WP-24	Crane Coupling	1	Cast Iron ASTM A126 Class B
WP-27	3/8" Eyebolt #23	1	Forged Steel
WP-28	3/8"-16 x 1 Hex Cap Screw	1	Zinc Plated Steel
WP-29	Base Flange	1	Cast Iron ASTM A126 Class B
WP-30	Retaining Ring	1	Steel, Zine Dichrome Coating



551-Angle Gear Kit to be used with 2945-Wall Post.

Post Only - UL Listed, FM Approved

## PARTS LIST

NO.	ITEM	QTY	MATERIAL
1	Bolts	2	Zinc Plated Steel
2	Key	2	Steel
3	Stem	1	Cold Rolled Steel
4	Gear Bracket	1	Cast Iron ASTM A126 Class B
5	Angle Gear	2	Cast Steel
6	Wall Bracket	1	Sheet Metal
7	Nuts	2	Zinc Plated Steel
8	Stem	1	Cold Rolled Steel
9	Extension Coupling	1	Cast Iron ASTM A126 Class B
10	Cotter Pin	3	Brass
11	Stem 1" Square	1	AISI M1020
12	Crane Coupling	1	Cast Iron ASTM A126 Class B

MATERIAL	4	6	8	10	12
<b>A</b> Centerline to Coupling	14.75	19	22.50	26.50	30
<b>B</b> Minimum Dimension-Centerline of valve to Centerline of Indicator Post	25	29	32.50	36	40.375
<b>C</b> Minimum Dimension-Centerline of Valve to Wall	7	7	8.375	9.375	10.50
<b>E</b> Minimum Stem Length from Wall	10	10	10	10	10
Stem Length	24	24	24	36	36

**NOTE:** Angle Bracket Kit includes two equal length stems. Available kit lengths are 18", 24", 36" and 52"

**WE PROUDLY SERVE**



**PETROLEUM OIL & GAS**



**MANUFACTURING**



**INSTITUTIONAL**



**COMMERCIAL**



**KENNEDY VALVE**

**ORDERING  
INFORMATION**

PH: 800-782-5831  
607-734-2211  
FAX: 800-952-4771

[SALES@KENNEDYVALVE.COM](mailto:SALES@KENNEDYVALVE.COM)  
[WWW.KENNEDYVALVE.COM](http://WWW.KENNEDYVALVE.COM)

**KENNEDY VALVE**

1021 E. WATER ST.  
ELMIRA, NY  
14902-1516



For Generations