

## Instructions for Installing a Potter Switch on a Figure 2945(A) Vertical Indicator Post

It is possible to install a Potter PCVS-1 or –2 Supervisory Switches on a 2945(A) Vertical Indicator Post with a minimum of tools & trouble.

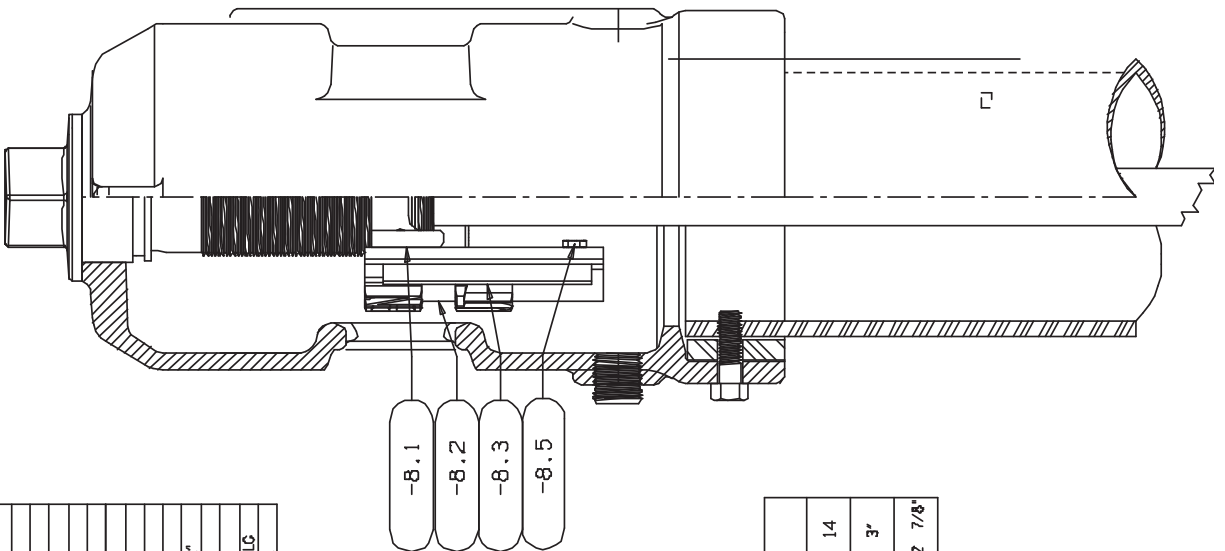
The Kennedy Valve Indicator Post Catalog is quite detailed & the POTTER Switch Technical Manual has excellent instructions.

The instructions below apply only to using a standard Post to monitor the OPEN Position of a standard OPEN LEFT Valve.

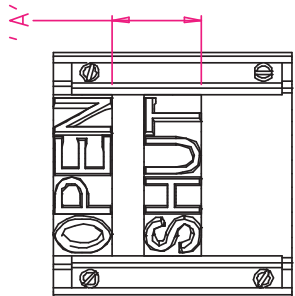
*\*Monitoring the CLOSED Position of an OPEN LEFT Valve or monitoring the OPEN Position of an OPEN RIGHT Valve require that an additional hole be drilled & tapped in the Top Section of the Post.*

1. Refer to Kennedy Valve Catalog Cut.
2. Assure that the Valve is SHUT.
3. Remove the ½-NPT Pipe Plug from the Top Section of the Post.
4. Remove the Locking Wrench (Item P-1) from the Post & set it aside.
5. Remove the 3/8" Eye Bolt (Item P-10) from the Post & set it aside.
6. Remove the 3/8" Hex Cap Screw from the Post & set it aside.
7. Lift the Entire Top Section (Item P-4) including the Operating Nut (Item P-2) and Target Carrier Assembly (Item P-8) from the Post & Place it on a clean surface.
8. Turn the square at the top of the Operating Nut (Item P-2) until the Operating Nut disengages from the Target Carrier Assembly.  
Do not become concerned if the Operating Nut "pops" out of the iron Top Section (P-4). It is retained by an O-Ring (Item P-3) & may be easily be pushed back in place.
9. Properly locate the '**OPEN**' & '**SHUT**' Plates on the Target Carrier Plates by following the instructions in the Kennedy Valve Catalog. The '**OPEN**' Plate should be all the way to the top of the Assembly as shown in the Kennedy Valve catalog. (see note for open right valves)
10. Reinstall the Target Carrier Assembly (P-8) & Operating Nut (P-2) in the Top Section (P-4) assuring that the '**SHUT**' Plate is centered in the Window of the Top Section
11. Refer to the POTTER Switch Technical Manual.
12. Thread the Potter Switch into the ½"-NPT hole in the top Section.  
When properly installed the Operating rod of the Switch should be projecting upward, towards the top of the Post Top Section.
13. Using the special Allen Wrench provided with the Potter Switch remove the Cover from the Switch.
14. Turn the Operating Nut (P-2) so that the Target Carrier Assembly moves downwards.
15. When the '**OPEN**' Plate is centered in the Window of the Top Section the bottom of the black, painted, sheet metal, Target Carrier Plate should be pressing down on the Operating Rod of the Potter Switch.
16. Adjust the Operating Rod of the Potter Switch per the instruction in the POTTER Switch Technical Manual. The rod should be extended enough to comfortably engage the bottom of the sheet metal, Target Carrier Plate but should not project in so far as to interfere with the 1" Square Stem of the Post.
17. When the '**OPEN**' Plate is centered in the Window of the top Section the Operating Rod of the Switch should be held down not forced down by the bottom of the sheet metal, Target Carrier Plate.
18. Check the operating of the Switch by turning the Operating Nut CLOSE & OPEN a few times. It is possible to hear the Contacts in the Switch "click".
19. Turn the Operating Nut until the '**SHUT**' Plate is centered in the Window of the Top Section.
20. Replace the entire Top Section Assembly on the Post, reinstalling the Eye Bolt & Hex Head Cap Screw. Assure that the 1" Square Stem enters the square socket in the Operating Nut.
21. Check the Switch operation one last time.
22. Wire the Switch
23. Replace the Cover on the Switch.

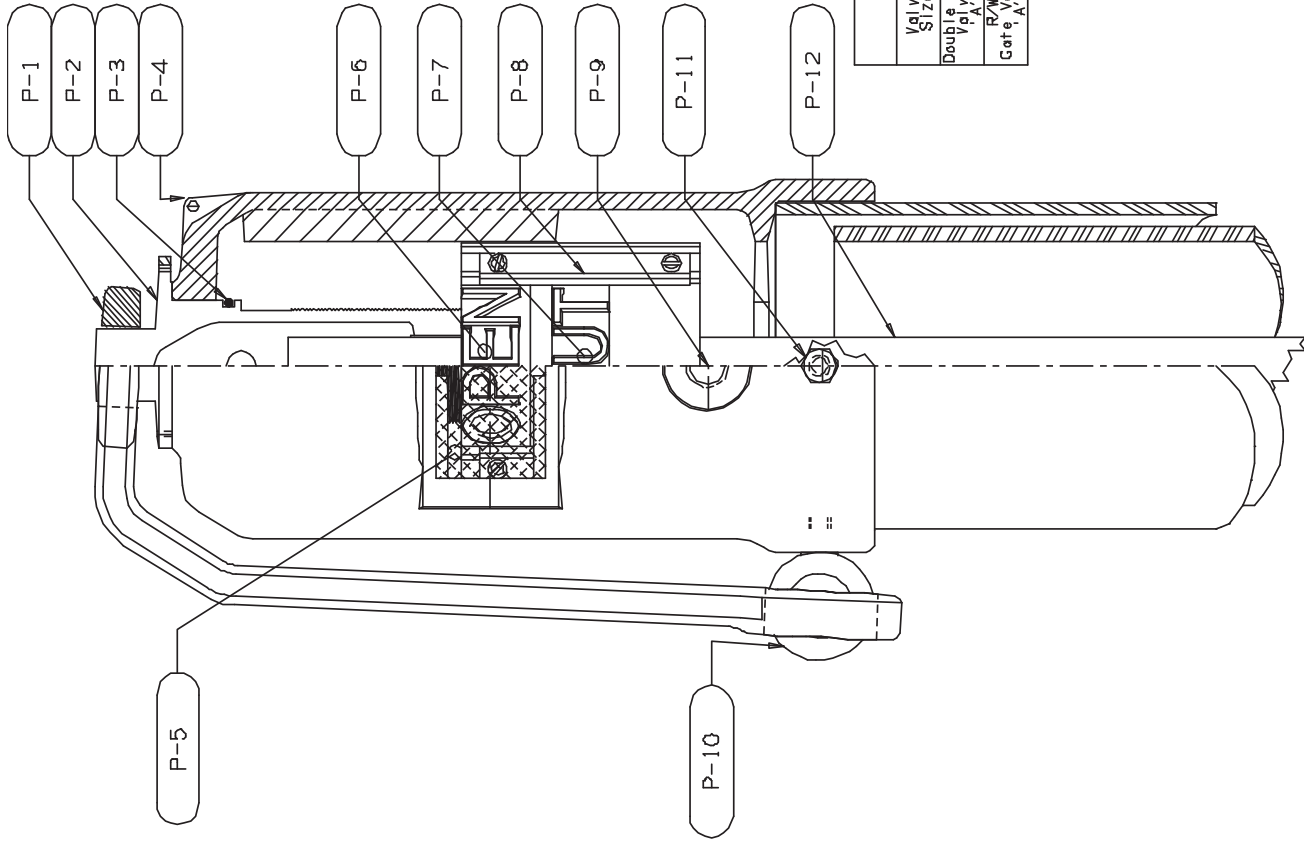
\*NOTE: For OPEN RIGHT valves, the OPEN & SHUT plates are reversed (SHUT is on the top)



ITEM	QTY	DESCRIPTION
P-1	1	LOCKING WRENCH
P-2	1	OPERATING NUT
P-3	1	RETAINER RING
P-4	1	TOP SECTION
P-5	2	WINDOW
P-6	2	'OPEN' TARGET
P-7	2	'SHUT' TARGET
P-8	1	TARGET CARRIER ASSEMBLY
-8.1	1	TARGET CARRIER NUT
-8.2	2	TARGET CARRIER PLATE
-8.3	4	TARGET RETAINER CLAMP
-8.4	8	PAN HEAD SCREW #10-24 X 1/2"
P-9	1	PIPE PLUG 1/2" IPT
P-10	1	EYEBOLT 3/8" X 1" LG.
P-11	1	HEX HEAD SCREW 3/8"-16 X 1" LG.
P-12	1	SQUARE STEM 1" SQ. STEEL



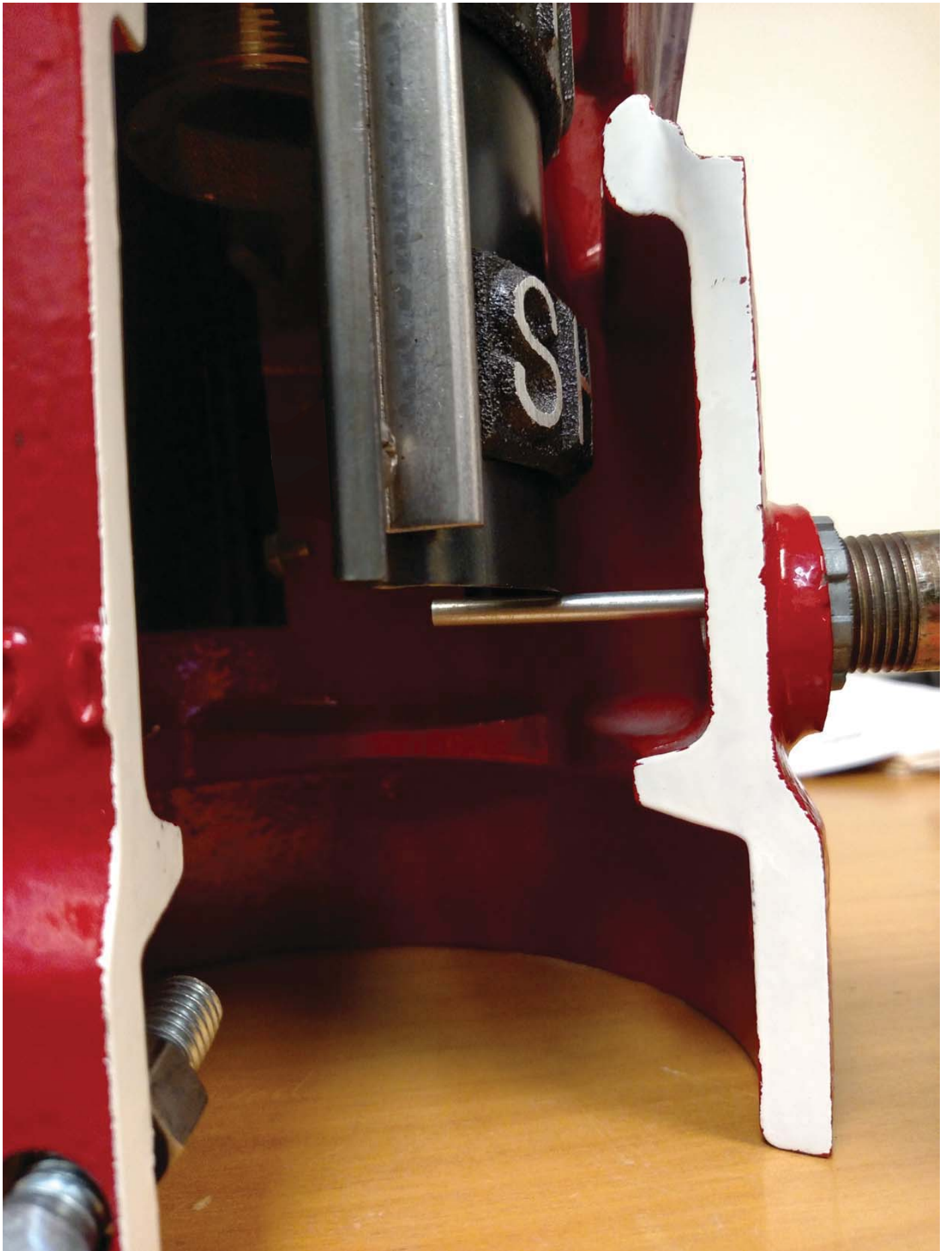
Valve Size	4	6	8	10	12	14
Double Valve	1"	1 3/8"	1 13/16"	2 3/16"	2 5/8"	3"
Gate Valve	1 5/16"	1 11/16"	2 1/8"	2 1/2"	2 7/8"	





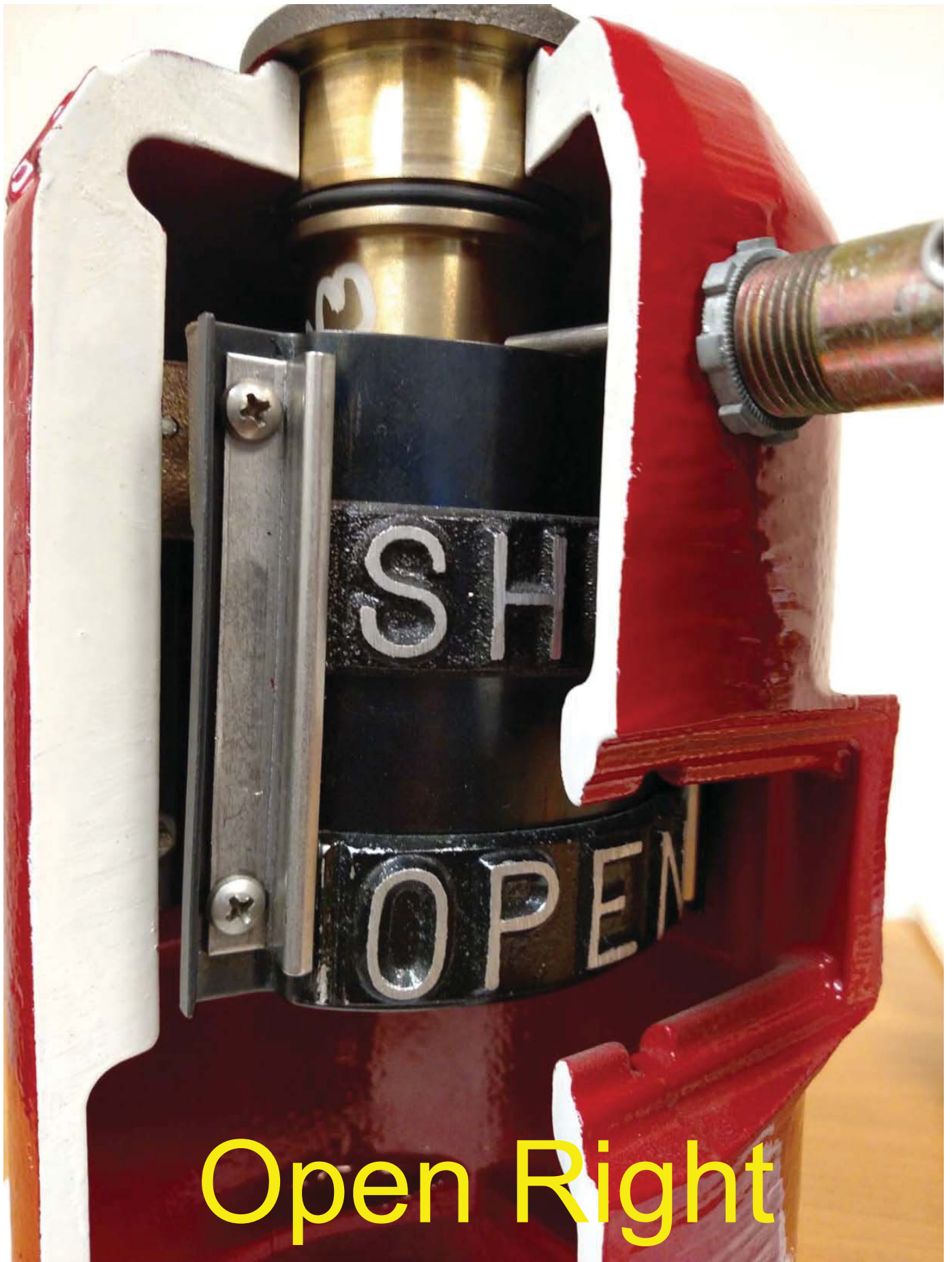
1/11/20





1/11/20





Open Right