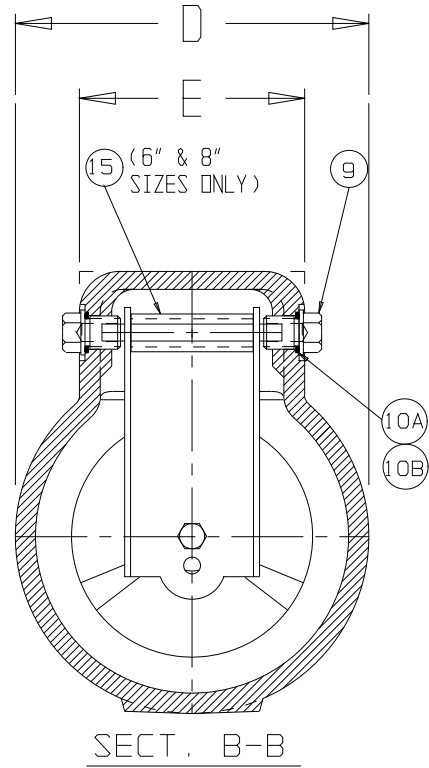
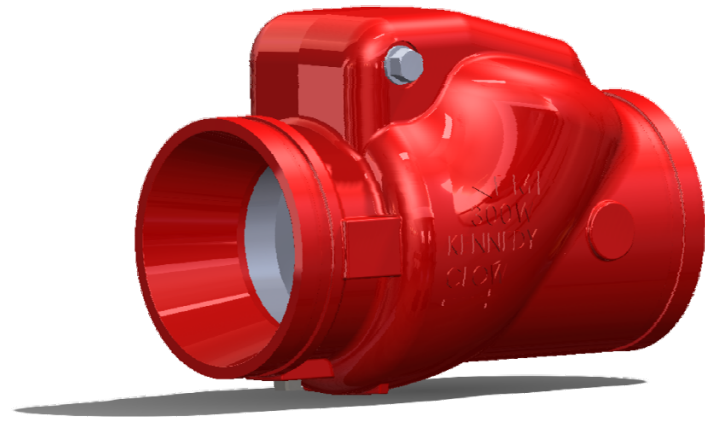
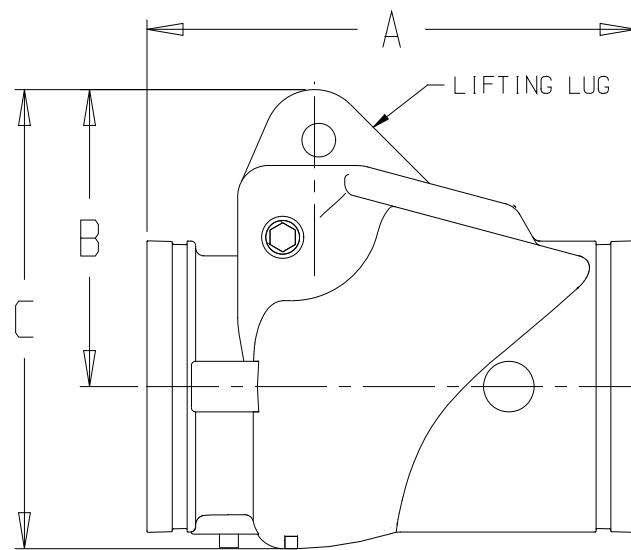
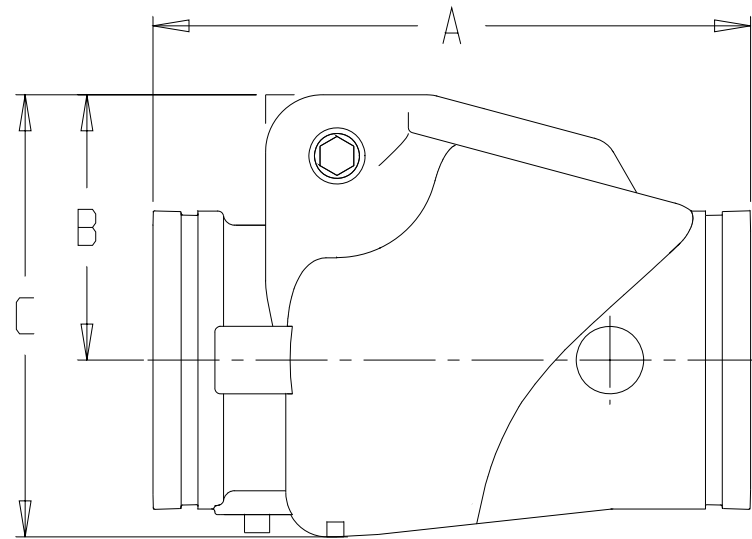
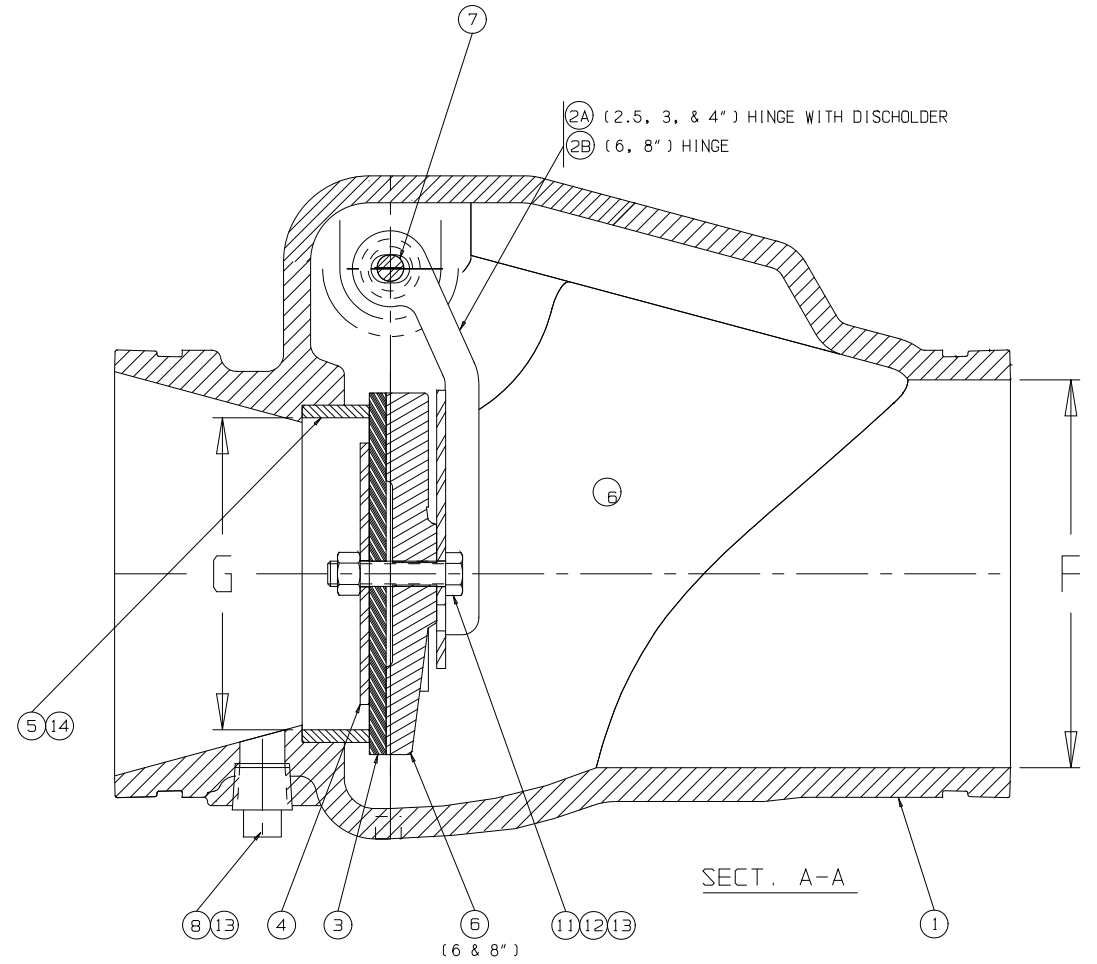


SIZE	A	B	C	D	E	F	G
2.5	8.63	3.1	5.6	4.8	4.0	2.5	2.0
3	9.13	3.4	6.0	5.3	4.0	3.0	2.4
4	10.00	3.8	6.8	6.0	4.0	4.0	3.0
6	13.28	6.0	10.0	7.9	5.0	6.0	4.6
8	14.50	8.8	13.6	9.6	5.0	8.0	6.2



MARK.	QTY.	PART NAME	MATERIAL	REMARKS
1	1	VALVE BODY	DUCTILE IRON	
2A	1	HINGE WITH DISC HOLDER (INTEGRAL)	STAINLESS STEEL (SS304)	SIZE 2.5-4"
2B		HINGE	STAINLESS STEEL (SS304)	SIZE 6 & 8"
3	1	RESILIENT DISC	EPDM (2.5-6"), BUNA N (8")	
4	1	DISC PLATE	STAINLESS STEEL (SS304)	
5	1	SEAT RING	BRASS- TIN COATED	
6	1	DISC HOLDER	DUCTILE IRON	SIZE 6 & 8"
7	1	HINGE PIN	STAINLESS STEEL (SS304, 18-8)	
8	1	1/2" PIPE PLUG	STEEL	
9	2	SIDE PLUG	STAINLESS STEEL (SS304, 303)	
10A	2	O-RING - DASH 110	UL NITRILE	SIZE 2.5-4"
10B	2	O-RING - DASH 113	UL NITRILE	SIZE 6 & 8"
11	1	NUT	STAINLESS STEEL (18-8)	
12	1	BOLT	STAINLESS STEEL (18-8)	
13	1	SEALANT		
14	1	SEALANT		
15	1	SPACER	BRASS 1/2" PIPE	SIZE 6 & 8"

NOTE: REFER TO BILL OF MATERIAL FOR DRAWINGS AND SPECIFIC SIZES OF HARDWARE.



REV	DATE	ECN	DESCRIPTION
2	11/15		ADDED TABULATION
1	2/15		RELEASE FOR PRODUCTION RUN

MATERIAL:	KENNEDY VALVE ELMIRA, NY 14901
MATL. WEIGHT	
MACHINED TOLERANCE	
FILE PATH	GROOVED END, ENCLOSED CHECK VALVE ASSEMBLY - FIG 726
DRAWN BY: JEB/BES	
ISSUED: 1/23/15	DWG NO. 81729
SCALE NONE	REV 02